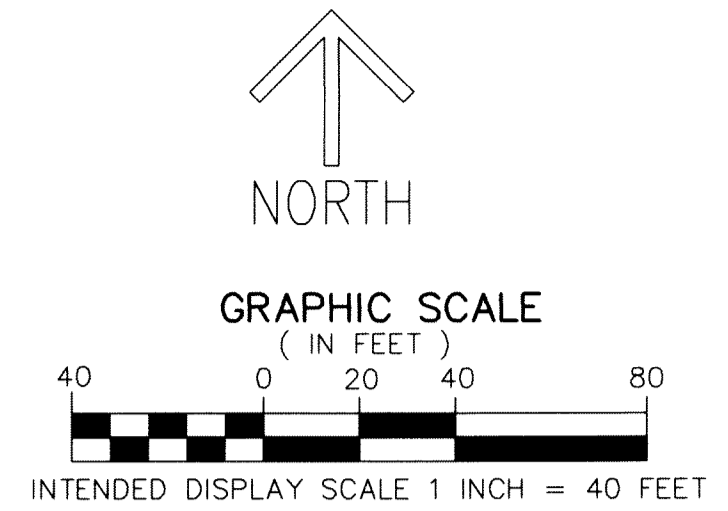


STOP AND SHOP PROPERTY

AN MUPD
A REPLAT OF A PORTION OF
TRACT 1, BLOCK 67, THE PALM
BEACH FARMS COMPANY PLAT NO.
3, AS RECORDED IN PLAT BOOK 2,
PAGES 45 THROUGH 54 THE
PUBLIC RECORDS OF PALM BEACH
COUNTY, FLORIDA, LYING IN
SECTION 24, TOWNSHIP 46 SOUTH,
RANGE 41 EAST,
PALM BEACH COUNTY, FLORIDA

SHEET 2 OF 2



PRESERVE PARCEL 1
(PLAT BOOK 107, PAGE 83, P.B.C.R.)

RIGHT-OF-WAY (P.B. 107,
PAGE 83, P.B.C.R.)

PUBLIC RIGHT-OF-WAY, WIDTH VARIES
FDOT R/W MAP SECTION NO. 93210-2524,
DATED 4-3-96
ROAD PLAT BOOK 1, PAGES 35-41

PUBLIC R/W PARCEL 101
(PER ORB 10600, PAGE 561, P.B.C.R. &
ORB 10714, PAGE 1677, P.B.C.R.)

10' UTILITY EASEMENT (P.B. 107, PAGE 83, P.B.C.R.)
5' LIMITED ACCESS EASEMENT (P.B. 107, PAGE 83, P.B.C.R.)

VARIABLE WIDTH PUBLIC RIGHT-OF-WAY
(PER ORB 10600, PAGE 561, P.B.C.R. &
ORB 10714, PAGE 1677, P.B.C.R.)
FDOT R/W MAP SECTION NO. 93210-2524,
DATED 4-3-96

NORTH RIGHT-OF-WAY LINE PER ORB
10600, PAGE 561, P.B.C.R. & FDOT MAP
93210-2524

ATLANTIC AVENUE
STATE ROAD 809
PUBLIC RIGHT-OF-WAY
WIDTH VARIES

75' PUBLIC RIGHT-OF-WAY - PARCEL 114
(PER ORB 6522, PAGE 670, P.B.C.R.)
(PER ORB 9904, PAGE 1675, P.B.C.R.)

PUBLIC RIGHT-OF-WAY - PARCEL 109
(PER ORB 6522, PAGE 663, P.B.C.R.)

SOUTH RIGHT-OF-WAY - PARCEL 109
(PER ORB 6522, PAGE 663, P.B.C.R.)

N89°06'45"E
530.80'

10' UTILITY EASEMENT
490.59' TOTAL PARCEL A NORTH LINE

POINT OF BEGINNING
SET PRM
N 771311.807
E 916276.021

POINT OF COMMENCEMENT
NORTHEAST CORNER OF SECTION
24-46-41
FOUND IRON ROD
AND CAP FDOT
N 771375.398 E 916517.126
WHICH IS 0.04' WEST AND 0.29' NORTH
OF PALM BEACH COUNTY PUBLISHED
POSITION OF
N 771375.112
E 916517.163
ALL TIES TO THIS CORNER ARE BASED
ON PALM BEACH COUNTY PUBLISHED
POSITION

NORTHWEST CORNER OF
SECTION 24-46-41
PBCP
NOT RECOVERED
N 771269.745
E 911247.581

S88°51'16"W
4497.64'
N88°51'16"E
5270.64' (GRID) 5270.54' (GROUND)

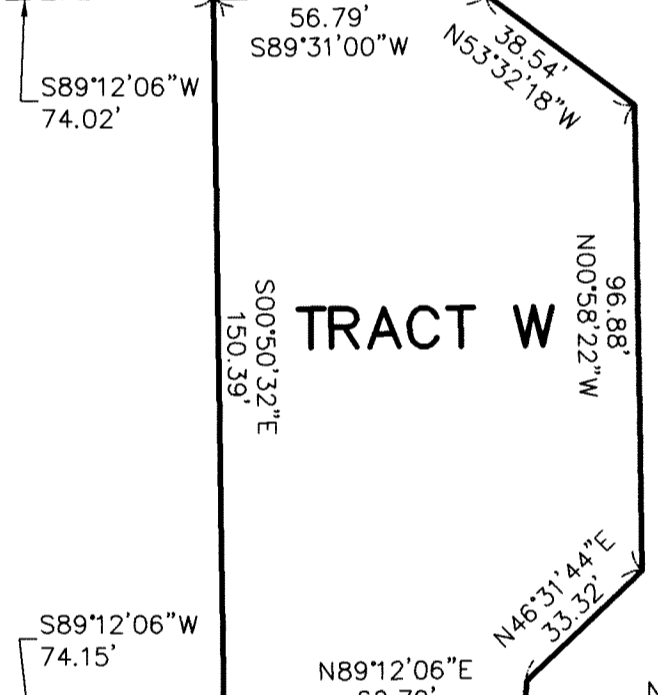
S89°03'49"E
2022.06' (GRID)
2022.02' (GROUND)
FOUND PALM BEACH
COUNTY MONUMENT
SQUEEZE
N 771336.630
E 913723.483

TRACT 2, BLOCK 67,
PALM BEACH FARMS COMPANY PLAT NO. 3
(PLAT BOOK 2, PAGE 45-54 P.B.C.R.)

CROSS ACCESS EASEMENT
(O.R.B. 29340, PAGE 1478, P.B.C.R.)

WEST LINE OF TRACT 1, BLOCK 67 420.01'

TRACT 1, BLOCK 67
NW CORNER
N 771303.585
E 915745.275



PARCEL A

10' X 30' PALM TRAN
MASS TRANSIT EASEMENT

A PORTION OF TRACT 1, BLOCK 67,
PALM BEACH FARMS COMPANY PLAT NO. 3
(PLAT BOOK 2, PAGE 45-54 P.B.C.R.)

SET PRM
N 770891.809
E 916280.289

WEST R/W LINE (PER ORB 10226, PAGE 121, P.B.C.R.)

PUBLIC R/W PARCEL 117
(ORB 10226, PAGE 121,
P.B.C.R.)

S89°08'38"W
327.97' CALC 328.58 DEEDS/PLATS
158.58' DEED
157.97' CALC

SE CORNER SECTION 24-46-41
NOT RECOVERED
PBCP
N 765961.199
E 916592.656

STATE ROAD # 7 (U.S. # 441)

PUBLIC RIGHT-OF-WAY, WIDTH VARIES
FDOT R/W MAP SECTION NO. 93210-2515,
REVISED DATE 5-6-15
ROAD PLAT BOOK 1, PAGES 35-41
DEED BOOK 637, PAGE 487, P.B.C.R. &
(BEARING BASIS) S00°43'34"E 5418.92' GROUND 5419.02' GRID
EAST LINE OF SECTION 24-46-41
479.70'

EAST LINE OF TRACT 1 BLOCK 67
(PLAT BOOK 2, PAGE 45-54 P.B.C.R.)
479.28'

WEST LINE OF SECTION
19-46-42

CANAL E-1 60' PUBLIC R/W (P.B. 14, PAGE, 45, P.B.C.R.)

A PORTION OF MILLER'S PARK UNIT 3
(PLAT BOOK 14, PAGE 45 P.B.C.R.)

LEGEND/ABBREVIATIONS

- CL - CENTERLINE
- D.B. - DEED BOOK
- E - EASTING (WHEN USED WITH COORDINATES)
- F.D.O.T. OR FDOT - FLORIDA DEPARTMENT OF TRANSPORTATION
- LB - LICENSED BUSINESS
- N - NORTHING (WHEN USED WITH COORDINATES)
- NO. - DENOTES NUMBER
- ORB - OFFICIAL RECORD BOOK
- P.B. - PLAT BOOK
- PBCP - PALM BEACH COUNTY POSITION
- P.B.C.R. - PALM BEACH COUNTY RECORDS
- R/W - RIGHT-OF-WAY
- UE - UTILITY EASEMENT
- U.S. - UNITED STATES
- PRM - DENOTES PERMANENT REFERENCE MONUMENT
4" x 4" x 24" CONCRETE MONUMENT WITH
ALUMINUM DISK STAMPED "C&W PRM LB3591"
- - DENOTES PERMANENT CONTROL POINT,
PK NAIL/BRASS DISK STAMPED PCP LB3591
UNLESS OTHERWISE NOTED
- △ - PALM BEACH COUNTY CONTROL POINT
- - DENOTES SET 5/8" IRON ROD WITH PLASTIC CAP ENGRAVED
LB3591
- 24-46-41 AND ANY COMBINATION OF NUMBERS
DENOTES SECTION, TOWNSHIP AND RANGE

NOTES COORDINATES, BEARINGS AND DISTANCES

COORDINATES SHOWN ARE GRID
DATUM = NAD 83 (90/98 ADJUSTMENT)
ZONE = FLORIDA EAST
LINEAR UNIT = US SURVEY FEET
COORDINATE SYSTEM 1983 STATE PLANE
TRANSVERSE MERCATOR PROJECTION
ALL DISTANCES ARE GROUND, UNLESS SHOWN OTHERWISE
SCALE FACTOR = 1.000018895
GROUND DISTANCE X SCALE FACTOR = GRID DISTANCE
BEARINGS AS SHOWN HEREON ARE GRID DATUM,
NAD 83 (90/98 ADJUSTMENT), FLORIDA EAST ZONE.